

July 25, 2023

United States Patent and Trademark Office  
Commissioner for Patents  
Attn: Vaishali Udupa  
P.O. Box 1450  
Alexandria, VA 22313-1450

Hon. Commissioner:

What follows is a provisional patent application for communication with (a) leprechaun(s), to be treated distinctly from the November 17, 2020 filing for communicating with “the” leprechaun that was submitted to your predecessor, Commissioner Hirshfeld. As before, we wish to request the USPTO’s continued commitment to disallowing anyone from owning these ideas, unless, of course, you are forced by law, in which case, we, and we alone will continue to carry the burden for the duration of the validity of patents issued by the USPTO until human-leprechaun communication methods can officially be part of the public domain.

In accordance with our candidacy for President of the United States, we offer an admission that perhaps we jumped the gun on our prior submission that was sent in haste before we arrived to the conclusion that all leprechauns are “deceased” persons. We will leave it to you and/or a patent examiner to conclude whether or not it’s also true that all “deceased” persons are leprechauns. As you can barely tell, Commissioner Udupa, we most certainly understand the difference between leprechauns and “deceased” persons now.

Should you wish to demoralize our efforts with rhetoric about either application forms or grammar, we invite you to (1) partake in the 7-7-7 festivities in 2032, (2) discover the truth for yourself about leprechauns, and (3) cough up the necessary funds for a full patent filing while pretending to know nothing at all about where the USPTO puts provisional patent filings that inventors don’t ever follow-up on.

As for the ceaseless requests from your office to reveal the details of any conversations that have or have not taken place between meself and (a) leprechaun(s), pls check your grammar.

Sincerely,

Jim Flannery

attch. PROVISIONAL PATENT APPLICATION

**UNITED STATES PROVISIONAL  
PATENT APPLICATION**  
**Flannery, J.**

**Invention title:** process for allowing *homo sapiens* to communicate with leprechauns

**Date Invention was first reduced to Practice:**  
on or after July 29, 2020

**Researcher:** Rev. James P.S. Flannery

*Notice:* Once again, I did *not* invent leprechauns nor this process, I only *discovered* it. As such, expect no form requiring me to list me name as an “inventor” of said process.

**Filed:** July 25, 2023

**ABSTRACT**

While leprechauns are known to exist, the nature of their communication method or what they truly are remains unpublished. As such, a novel and/or nonobvious process for allowing homo sapiens to communicate with (a) leprechaun(s) is described herein. Of particular interest to the reduction to practice of said methods remains to be *disabling the signal once the channel(s) is/are open*.

**2 Claims, 2 Drawing Sheets**

**Related U.S. Application Data**

Provisional application filed on November 20, 2020

**References Cited**

**U.S. PATENT DOCUMENTS**

None

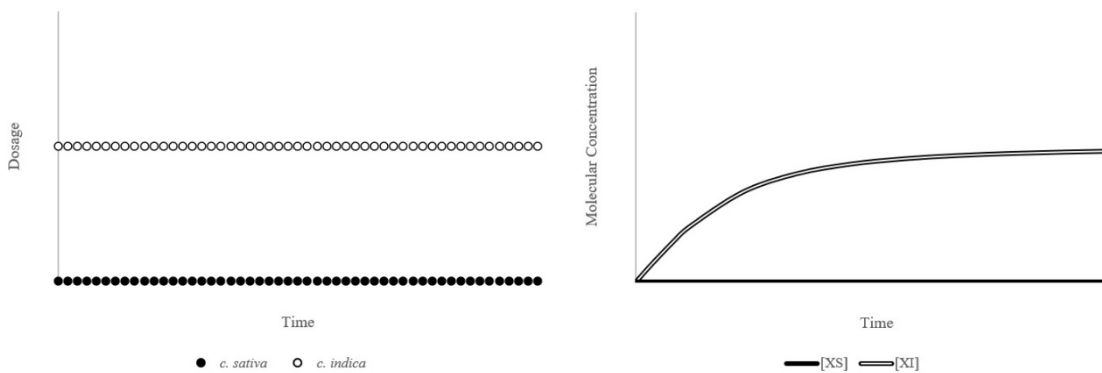
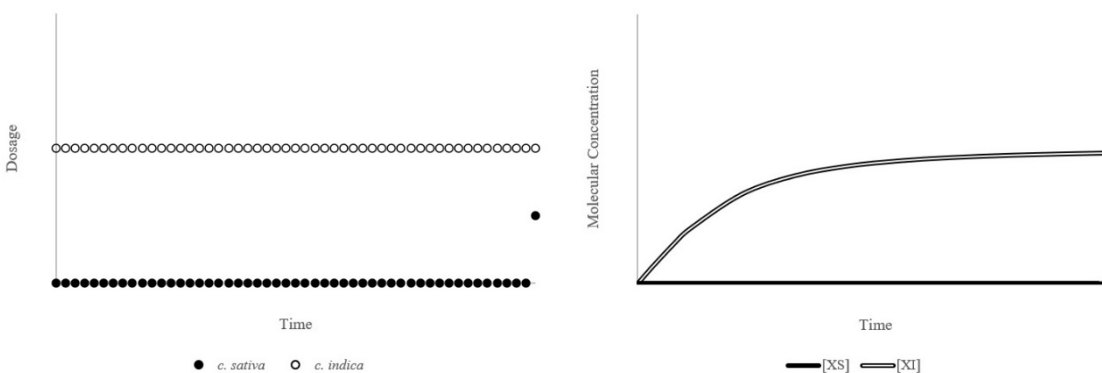
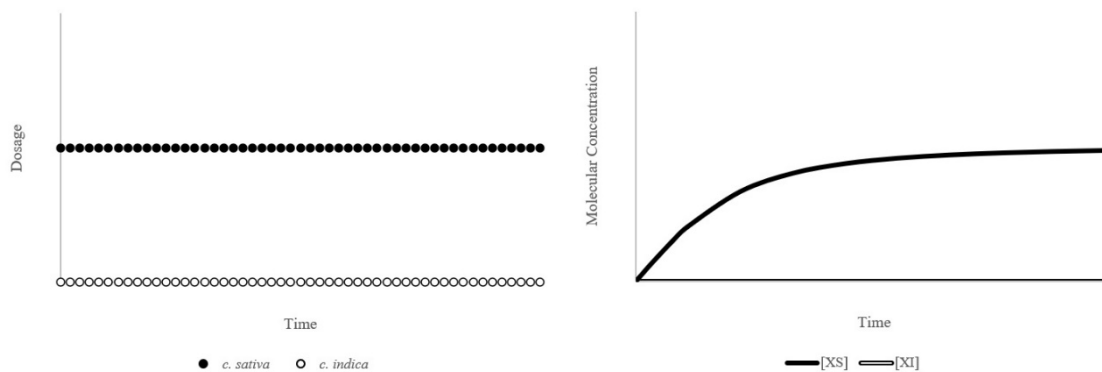
**FOREIGN PATIENT DOCUMENTS**

None

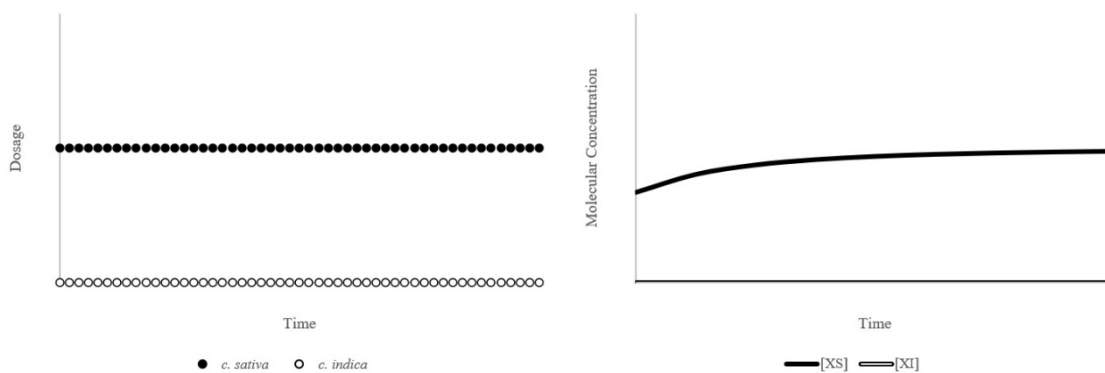
**OTHER PUBLICATIONS**

Letter to Commissioner Hirshfeld (2020)

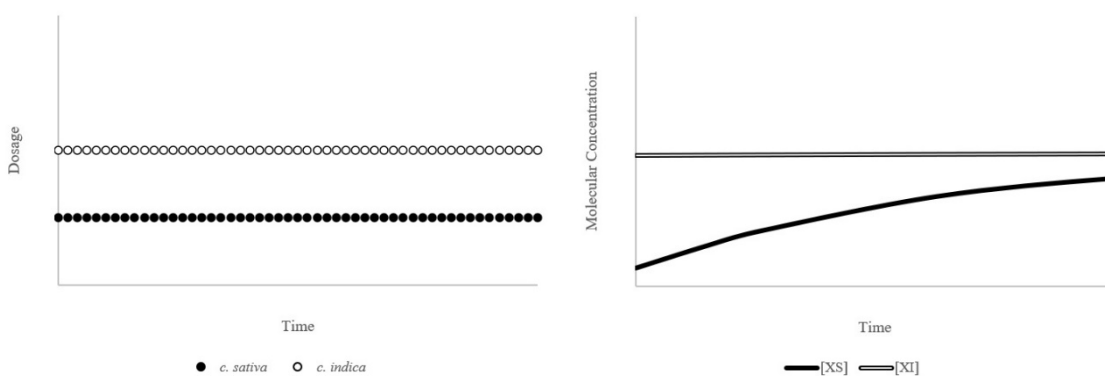
# DRAWING SHEET I



## DRAWING SHEET II



**Fig 2A: opening the second door via the  
“runaway sativa train” model**



**Fig 2B: opening the second door via the  
“strategic trigger” model**

# **PROCESS FOR ALLOWING *HOMO SAPIENS* TO COMMUNICATE WITH LEPRECHAUNS**

## **PRIORITY CLAIM**

While this application is not a continuation of the provisional filing from November 17, 2020, it should indeed lay claim to a priority level in service to the severity of the circumstances that may or may not exceed that of the previous filing.

## **BACKGROUND**

Given that no prior art for communication with leprechauns exists that includes reliable methodology, aside from processes depicting leprechauns as being only singular in their existence (ref. Letter to Commissioner Hirshfeld, 2020), one must rely on personal experience and personal experience alone to know whether or not said leprechaun(s) even exist(s).

While this disclosure pertains only to a process for allowing human-leprechaun communication to take place, the true mechanism of action of communication with leprechauns remains unsolved, with two proposed theories for future research. The first being through localized electromagnetic communication via photoreceptors at frequencies that must remain safe for all humankind and the never-to-be-mentioned second mechanism being non-local. There's also a third mechanism not included here, the exclusion of which is not at all to imply that the Resonant Recognition Model proposed by Irena Cosic's laboratory at RMIT has anything to do with vertebrates using their spinal cords for telepathic communication.

While communication via photoreceptors bears a disconcerting truth that leprechauns are *homo sapiens* who are "deceased" and now buried underground while still actively communicating in the same realm of existence we walk and talk in everyday, non-local communication opens the

gate for interdimensional communication with the truly dead.

As for the absence of a word for *homo sapiens* who are "deceased" but not truly dead, there is no absence at all; they are leprechauns.

The question of how long leprechauns remain leprechauns before becoming truly dead remains unsolved.

## **SUMMARY**

The process for *homo sapiens* to communicate with leprechauns involves the opening of two "doors." The process of opening the first door in a ceremonial or pre-determined ritual is now possible. An additional method for opening the first door is explained yet is not yet predictable, thus is deemed less safe without further (also unsafe) research.

The opening of the first door allows for a *homo sapien* to engage in communication with one leprechaun at a time.

The opening of the second door, though achieved, has not been optimized to a level of being able to implement a controllable trigger and, as such, additional human subjects are needed for study.

Naturally, the opening of the second door allows a *homo sapien* to engage in communication with more than one leprechaun at a time.

Of importance to clinical study is the ability to close the doors once opened. While closing of the first door has been achieved following it's opening, the same cannot be said of the second door.

Given the previous embodiment of the process for communicating with (a) leprechaun(s) submitted in 2020 includes extraneous experimental conditions now considered vestigial, one must proceed with the knowledge that the process has been reduced to practice for only one individual (implying that results may vary).

Derivatives of the process described herein for communicating with (a) leprechaun(s) may exclude the usage of hybrid cannabis plants despite artistic expressions dispelling the taxonomical assertion that “all cannabis plants are hybrids.”

#### BRIEF DESCRIPTION OF THE DRAWINGS

**FIG. 1 – 4** show characteristic dose-response curves for multiple cannabis regimens involving cannabis indica and/or cannabis sativa. Note that the specific protein(s) known to enable human-leprechaun communication remain an unsolved mystery and may or may not be cannabinoids at all. Both x- and y- axis scales on all figures are left to the unimagination. (Contrary to popular belief, the threshold molecular concentration to enable communication with a single leprechaun (opening “the first door”) using only *cannabis sativa* is not known at this point in time.

**FIG. 1** illustrates the methods for opening the first door, allowing for communication with one leprechaun. Three methods are shown (A-C) , two which allow the door to open (A, B) , one which does not (C). The first method (A) involves regular consumption of *cannabis sativa*, resulting in the opening of the first door at some unpredictable time. The second method (B) involves regular consumption of *cannabis indica* for roughly six months as a means of “pre-loading” certain proteins to prepare for the triggering event provided by a single dosing of *cannabis sativa*. The final method (C) merely indicates that current evidence does not support the hypothesis that continual use of *cannabis indica* will ever open the first door.

**FIG. 2** illustrates the methods for opening the second door, allowing for communication with more than one leprechaun. Ostensibly, continued use of Method A will allow for this to door to open though keep in mind results may or may not take upwards of six months or beyond to achieve. Alternatively, Method B can lead to the second door opening as well. Keep in mind that

proceeding from door one to door to may be a lengthy, enduring trial. Since numerous obvious (and novel!) difficulties exist in experimenting with the second door, proceed safely.

**FIG. 3** and **FIG. 4** were intended to depict dosing processes for closing the two doors, however they do not exist anymore as they are best explained in words.

The closing of the first door has been achieved by ceasing consumption of both *cannabis sativa* and *cannabis indica*, though one might expect cessation of only *cannabis sativa* consumption could achieve the same outcome.

As for the second door; some doors, once opened, cannot be closed.

#### DETAILED DESCRIPTION

Although future research may lead to discoveries resulting in obvious and literally novel inventions neither shown nor described herein with respect to preferred embodiments, various additions, deletions and modifications that are obvious to a person skilled in the art to which the discovery pertains, even if not shown or specifically described herein, are deemed to lie within the scope of this disclosure as encompassed by the following claims.

The “invention” is claimed as follows:

1. A process comprising:

at least one *homo sapien*;

at least one glass pipe; and

at least one inflammatory tool (not to be confused with the *homo sapien* them~~s~~Elves), and

at least *cannabis sativa*, which when regularly ignited by the at least one inflammatory tool while inside the at least one glass pipe, eventually causes the at least one *homo sapien* to

communicate with at least one  
leprechaun

2. A process comprising:

at least one *homo sapien*;

at least one glass pipe; and

at least one inflammatory tool (not to be  
confused with the *homo sapien*  
themselves),

at least *cannabis indica* and *cannabis*  
*sativa*, which when mixed in a 10 to 1  
ratio and ignited by the at least one  
inflammatory tool while inside the at  
least one glass pipe, may or may not  
cause the at least one *homo sapien* to  
communicate with at least one  
leprechaun if and only if the *homo*  
*sapien* has sufficiently pre-loaded their  
consciousness with requisite *cannabis*  
*indica*